



GRANTMAKING FOR IMPACT

Presented by Jawanza Malone, Wieboldt Foundation

Impact

im·pact | \ 'im-,pakt \

plural impacts

Definition of *impact*

1a: an impinging or striking especially of one body against another

b: a forceful contact or onset

also : the impetus communicated in or as if in such a contact


2: the force of impression of one thing on another : **a significant or major effect**

the impact of science on our society

a study outlining the potential environmental impacts of the construction project

*WHO KEEPS
CHUCKING
THESE KIDS
IN THE RIVER?*

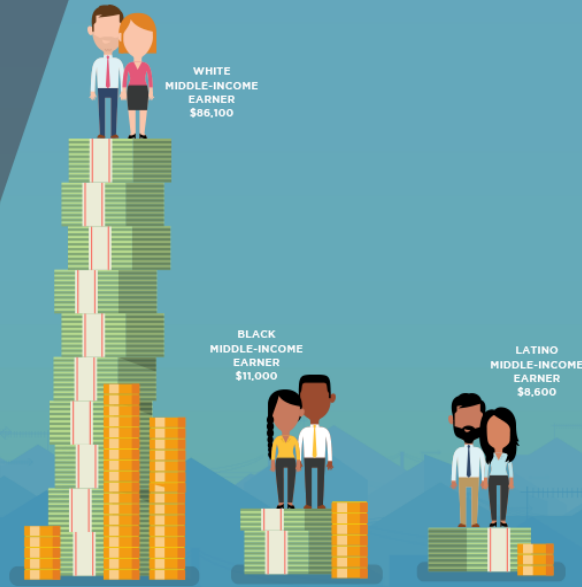




“It’s not that they can’t see the solution. They can’t see the problem.”

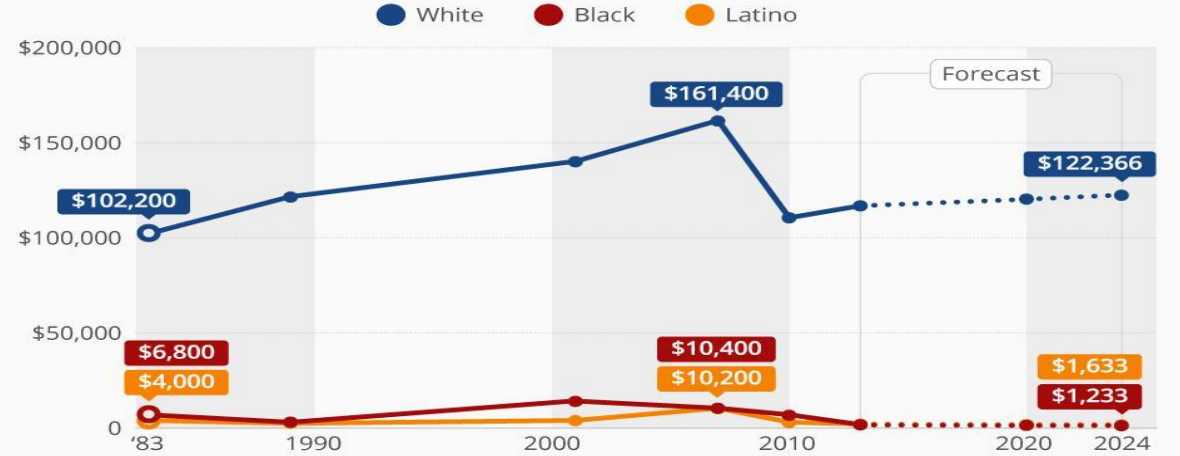
G.K. Chesterton

WHITE HOUSEHOLDS IN THE MIDDLE-INCOME QUINTILE (THOSE EARNING \$37,201-61,328 ANNUALLY) OWN NEARLY EIGHT TIMES AS MUCH WEALTH (\$86,100) AS MIDDLE-INCOME BLACK EARNERS (\$11,000) AND TEN TIMES AS MUCH WEALTH AS MIDDLE-INCOME LATINO EARNERS (\$8,600).



Racial Wealth Inequality Is Rampant In The U.S.

Median household wealth by race/ethnicity in the United States (1983–2024)



IF THE RACIAL WEALTH DIVIDE IS LEFT UNADDRESSED, **MEDIAN BLACK HOUSEHOLD WEALTH IS ON A PATH TO HIT ZERO BY 2053.**






UPSTREAM

DOWNSTREAM

Where is your impact?

“Successful people ask better questions, and as a result, they get better answers.”

Tony Robbins



“Our recognition of community organizing (or community action) as the foundation’s prime concern, is promoted by our conviction that a sense of powerlessness and the apathy and alienation bred of this sense, are at the root of many of the ills of our time. We believe that funding those efforts that give people hope that they can exercise a degree of control over their lives, and that *involve them working together toward jointly defined ends*, is an important contribution to the resolution of social ills.”

Wieboldt Foundation

Funding Community Organizing

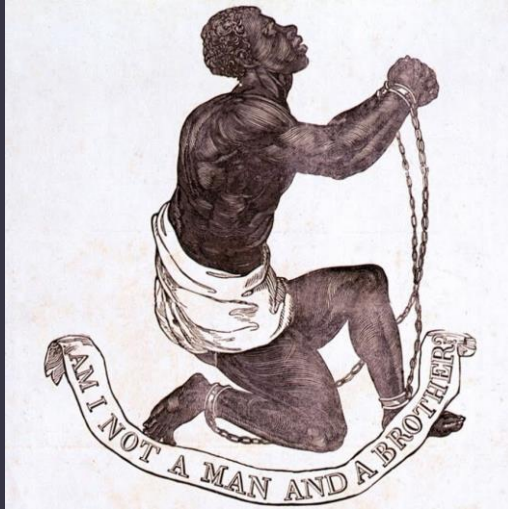
- ❖ Cost-effective
 - ❖ Financing upstream solutions are typically more cost-effective than funding downstream efforts
- ❖ Evidence-based
 - ❖ Community organizing has been the primary methodology leading to change throughout history
- ❖ Human-centered
 - ❖ Those persons who are closest to the problem are supported in developing their own solutions



“Democracy is messy, and it’s hard. It’s never easy.”

Robert Kennedy, Jr.

PROGRESSIVE ERA REFORM



Long Hours/Low Wages



Reduced working hours
Introduced minimum wage

