



THE LAKE COUNTY  
COMMUNITY FOUNDATION  
An affiliate of The Chicago Community Trust

## 2019-2020 REPORT TO THE COMMUNITY

---

**“The diversity and generosity of the people and communities in Lake County makes this a truly rare and special place.”**

**- KEVIN W., Waukegan**

**“I have met many good and caring people living and working in Lake County that make me proud to call it home.”**

**- STEVE F., Lake Forest**



**“I grew up here and am raising my kids here! I love the way our communities love each other’s families like they are their own. It takes a village and Lake County is that village!”**

**- EMILY P., Gurnee**

**“Lake County is a diverse community with a spirit of giving and a culture of taking care of its own—a community where families, businesses and nonprofit organizations can thrive.”**

**- ANN M., Wadsworth**

# MISSION

The mission of The Lake County Community Foundation is to improve the quality of life of the most vulnerable residents of the county by providing civic leadership, promoting collective philanthropy and partnering with our grant recipients.

## LCCF HELPS YOU GIVE WHERE YOU LIVE

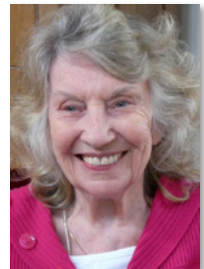
In 1914, when banker and philanthropic visionary Frederick H. Goff established the first community foundation in Cleveland, he knew communities would benefit greatly from having a trusted, local charitable resource dedicated to local causes. Today, LCCF continues to carry out Goff's vision by pooling charitable gifts for the betterment of the community we love and for our neighbors who need a helping hand. We recognize that one giving strategy does not fit all. That is why we offer a variety of services and tools to support your philanthropy — no matter which stage of life you're in. It's never too early (*or late*) to think about your family's charitable legacy! As you explore meaningful ways to make a difference in Lake County, we invite you to consider these opportunities:

- **Love Where You Live Club** — LCCF's monthly giving program enables donors to pool their resources with others to support our Basic Human Needs grant making. See back page.
- **Lake County Legacy Society** — Did you know you can name LCCF as a beneficiary on your life insurance, 401K or IRA without having to change your will? By adding LCCF to your estate plans, your generosity today ensures a brighter future for Lake County tomorrow.
- **Charitable Funds** — When you establish a named charitable fund with LCCF, you become our partner in giving. Our knowledgeable staff will work with you to ensure your personal goals and interests are met so you can feel great about your family's charitable legacy. See Figure 1: How a Donor Advised Fund Works.

### A Lasting Gift to Her Kids – Her Legacy Lives On

When 84-year-old retired teacher, Mary Ann Sanford, passed away in 2017 she had never married or had children. Mary Ann's children were the 1st through 5th graders she taught during her 31-year career, and she took great joy in watching them learn through special field trips to forest preserves, museums and area performances.

In her will, she provided for a designated fund to be held at LCCF to support special trips and programs for 3rd, 4th and 5th graders at Wheeling Elementary Schools—forever! Annual Sanford Grants from the Wheeling Consolidated School District #21 Fund will be available to teachers to provide extra learning opportunities for students. What a special legacy Mary Ann has left her kids!



Please call us if you have a special cause you would like to support; whether now or through your legacy giving.

# HEALTHY FOOD, HEALTHY COMMUNITIES



Here at the Foundation, we believe strongly that all people deserve access to fresh, nutritious and affordable food. That's why over the last three years, we have invested heavily in organizations working to increase that access and build community through food. In 2017, we partnered with two strong organizations, the Liberty Prairie Foundation (LPF) and Northern Illinois Food Bank (NIFB), to collaborate on a multi-year initiative to coordinate Lake County's food system and increase access to fresh, affordable food in underserved communities.

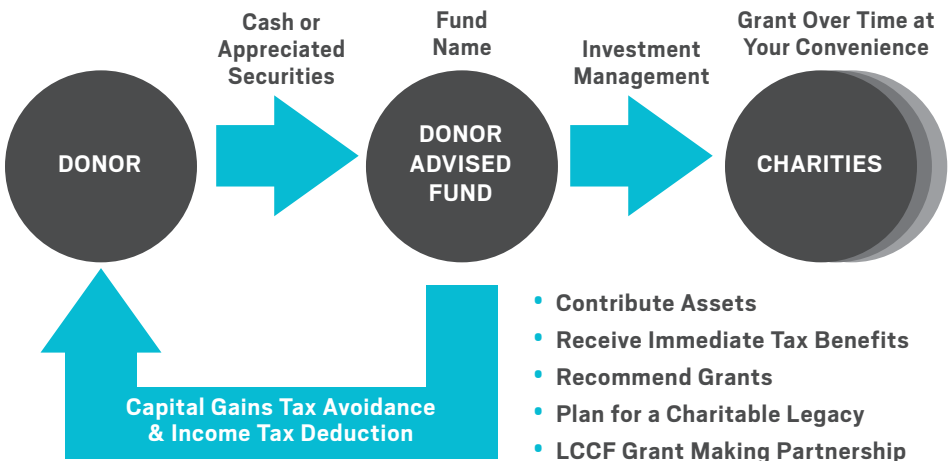
Through this strategic initiative, partners have: distributed hundreds of thousands of pounds of fresh food to pantries and local community groups, provided gardening and nutrition education to hundreds of community members and launched a dynamic new website called Grow Lake County to highlight and

better connect Lake County's unique food system ([www.growlakecounty.org](http://www.growlakecounty.org)). This site allows people to find local food through an interactive map of farmers markets, farm stands and more; includes gardening tips and local resources; connects people to groups working to feed their communities and much more.

LPF and NIFB reinvested a portion of LCCF's grant to support school gardens, food pantries and food access projects led by other nonprofits across Lake County. As our strategic partners, LPF and NIFB are using their expertise to grow and strengthen our local food network and provide greater access to fresh food in our communities that need it most.

The Foundation will publish an impact analysis at the end of 2020 when the initiative comes to a close. Stay tuned to our newsletter and social media to learn more!

## FIGURE 1: HOW A DONOR ADVISED FUND WORKS



# 2019 PROACTIVE AND COMPETITIVE GRANTS

In partnership with our fund holders in 2019, LCCF invested \$588,247 in grants. Our community investment strategy focused on improving access to affordable, nutritious food across the county, addressing basic human needs and supporting early childhood education and animal welfare.

## Local Food System Grants

Liberty Prairie Foundation – \$55,000  
Northern Illinois Food Bank – \$55,000

## Early Childhood Grants

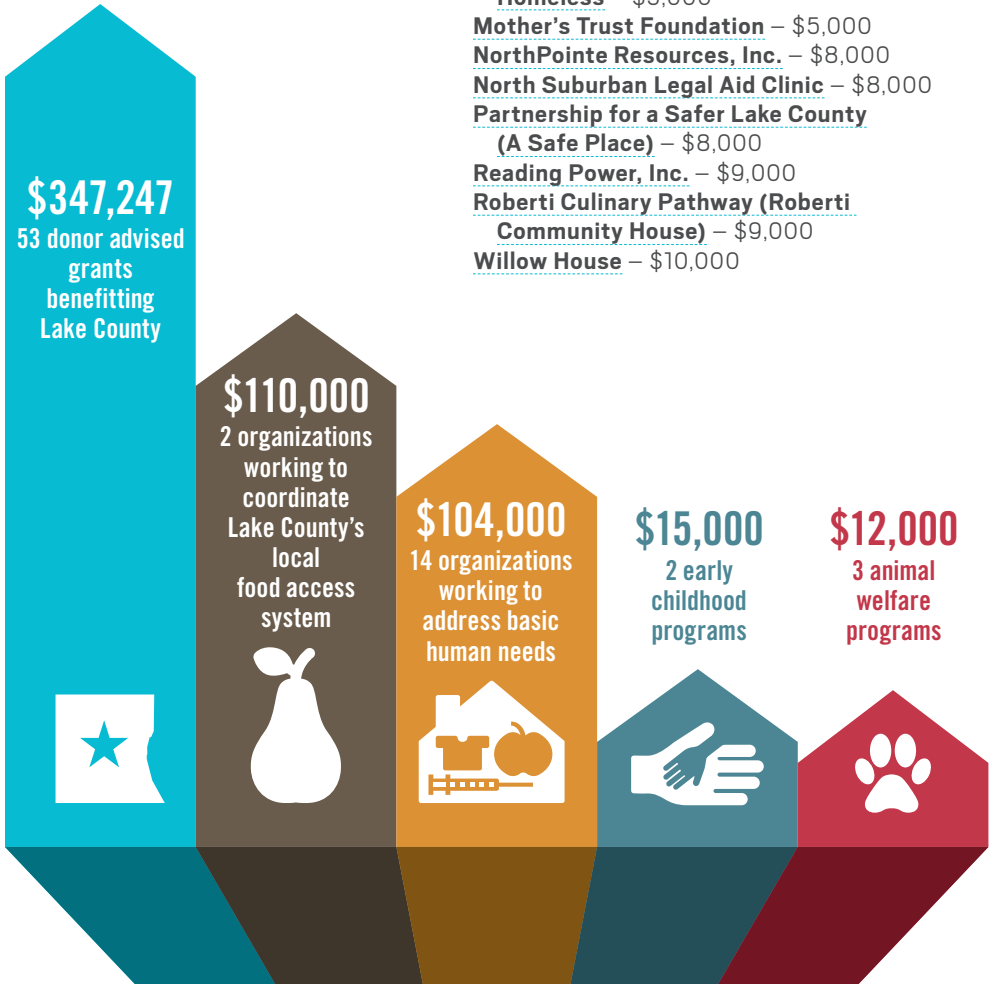
AAUW Preschool – \$7,500  
Twice as Nice Mother and Child – \$7,500

## Animal Welfare Grants

Heartland Animal Shelter – \$4,000  
Partners for Progress – \$5,000  
Spay and Stay – \$3,000

## Basic Human Needs Grants

Alexian Brothers Housing and Health Alliance – \$7,000  
Antioch Area Health Accessibility Alliance – \$5,000  
Art Impact Project – \$9,000  
Beacon Place – \$8,000  
College Bound Opportunities – \$8,000  
Farmworker and Landscaper Advocacy Project – \$5,000  
Lake County Coalition for the Homeless – \$5,000  
Mother's Trust Foundation – \$5,000  
NorthPointe Resources, Inc. – \$8,000  
North Suburban Legal Aid Clinic – \$8,000  
Partnership for a Safer Lake County (A Safe Place) – \$8,000  
Reading Power, Inc. – \$9,000  
Roberti Culinary Pathway (Roberti Community House) – \$9,000  
Willow House – \$10,000



# FINANCIAL HIGHLIGHTS

## STATEMENT OF FINANCIAL POSITION

*As of December 31, 2019*

### ASSETS

Operating Pool	\$	400,453
Investments		14,342,612

**Total Assets \$ 14,743,065**

### LIABILITIES AND NET ASSETS

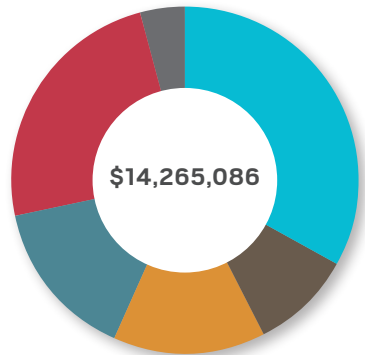
Liabilities	\$	153,841
Agency Funds held for others		324,138
Net Assets		14,265,086

**Total Liabilities and Net Assets \$ 14,743,065**

## DISTRIBUTION OF FUNDS

*As of December 31, 2019*

■ Donor Advised Funds	\$4,734,892	33.0%
■ Designated Funds	\$1,359,075	9.5%
■ Operating Endowment	\$2,025,660	14.1%
■ Unrestricted Endowment	\$2,119,926	14.8%
■ Restricted Endowment	\$3,424,323	24.5%
■ Administrative Funds	\$601,210	4.2%



## FUNDS UNDER MANAGEMENT

*As of January 2020*

- [4 Jack Adams Memorial Fund](#)
- [Adeline Steans Morrison Fund](#)
- [Allendale Shelter Club Fund](#)
- [Basic Human Needs Fund](#)
- [BKidz Fund](#)
- [Buchanan Family Foundation Fund](#)
- [District 103 Learning Fund](#)
- [Field Partners Fund](#)
- [First Presbyterian Church of Lake Forest Lake County Fund](#)
- [J.P. DePree Family Fund](#)
- [Jamee and Marshall Field Fund](#)
- [John and Elizabeth Gescheidle Family Fund](#)
- [Lake County Early Childhood Education Fund](#)
- [Lake County Humane Society Fund](#)
- [LCCF Endowment Fund](#)
- [Mother's Trust Foundation Fund](#)
- [Paul H. Daube Jr. Memorial Scholarship Fund](#)
- [Ragdale Foundation Cornerstone Fund](#)
- [Ravinia Centennial Fund](#)
- [Reusché Family Fund for PADS Lake County](#)
- [Richter Family Legacy Fund](#)
- [Robert F. Reusché Operating Endowment Fund](#)
- [Sanders Partners Fund](#)
- [Sedgebrook Benevolent Care Fund](#)
- [Sedgebrook Scholars Fund](#)
- [Wheeling Consolidated School District #21 Fund](#)
- [William H. Luking Memorial Fund](#)
- [Winthrop Harbor Education Enrichment Fund](#)

## JOIN THE LAKE COUNTY LEGACY SOCIETY

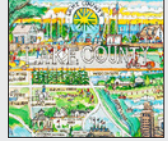
Leave a lasting family legacy in Lake County by making a gift to LCCF in your estate plans. By harnessing the power of endowments, assets left to the Foundation will continue to grow, supporting good work and emerging needs for years and generations to come.



# WANT TO SHOW YOUR LAKE COUNTY PRIDE?

JOIN OUR MONTHLY GIVING PROGRAM — THE LOVE WHERE YOU LIVE CLUB!  
[LAKECOUNTYCF.ORG/GIVE](http://LAKECOUNTYCF.ORG/GIVE)

- Give **\$25-\$99/month** and receive a Love Where You Live car magnet.
- Give **\$100 or more/month** and receive the car magnet and a poster of Lake County painted by renowned Lake Forest artist, Mark McMahon.



JOIN TODAY TO SUPPORT GRANTS TO LAKE COUNTY NONPROFITS!

## OFFICERS, BOARD OF DIRECTORS AND STAFF

*As of January 2020*

### Board of Directors

**Martha R. Hinchman**  
*Chair*

**Gale Strenger Wayne**  
*Vice-Chair*

**Ken Gotsch**  
*Treasurer*

**Tiffany M. Alexander**  
*Secretary*

**Jeanne Ang**  
**Bert Carstens**

**C. Lawrence Connolly**  
**Lisa Sarris Cowhey**

**Rev. Dr. Robert A. Davis**  
**Steve Fox**  
**Dr. Laura Brown Holt**

**Scott Humphrey**  
**Mary Reidy McMahon**

**Malcolm Newsome**  
**Ted Notz**

**John Sonnier**  
**Steve Sullivan**

### Staff

**Maggie Morales**  
*Executive Director*

**Wendy Richter**  
*Manager of Donor Services  
& Operations*

**Emily Weber**  
*Manager of Community  
Leadership & Investment*



*Use the QR code on the envelope to sign up.*

### SUBSCRIBE TO OUR E-NEWSLETTER AND FOLLOW US ON SOCIAL MEDIA

Visit our website today to sign up for our newsletter, "like" us on Facebook to access grantee features and follow us on LinkedIn to keep in touch with local philanthropy and social impact throughout the region!



114 S. Genesee Street, Suite 505, Waukegan, IL 60085  
847.377.0520 | [lakecountycf.org](http://lakecountycf.org)